

**Lesson Summary**

A ratio table, equation, or double number line diagram can be used to create ordered pairs. These ordered pairs can then be graphed on a coordinate plane as a representation of the ratio.

Example:

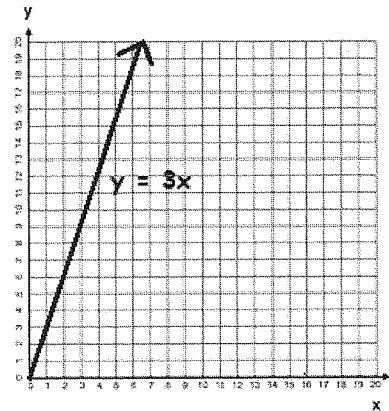
Equation:  $y = 3x$

$x$	$y$
0	0
1	3
2	6
3	9



Ordered Pairs

- $(x, y)$
- $(0, 0)$
- $(1, 3)$
- $(2, 6)$
- $(3, 9)$

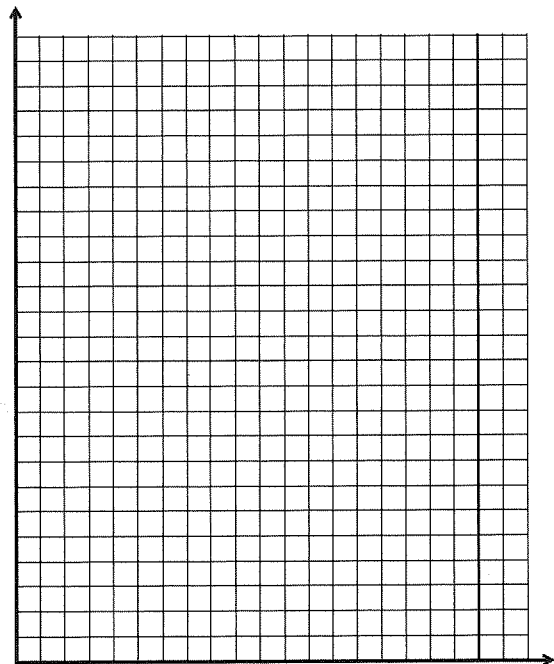


**Problem Set**

- Complete the table of values to find the following:

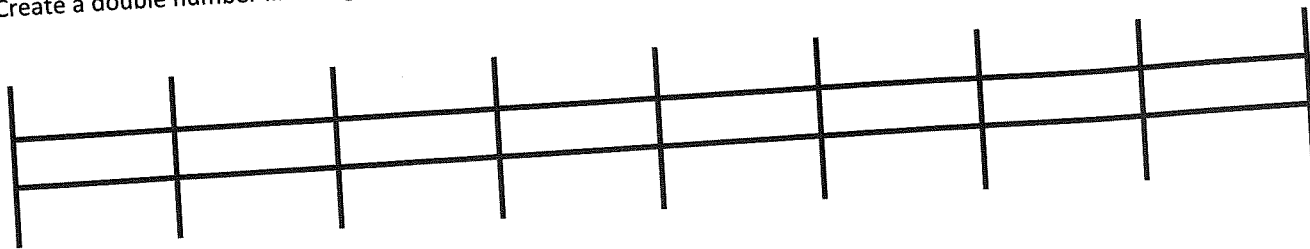
Find the number of cups of sugar needed if for each pie Karrie makes, she has to use 3 cups of sugar.

Pies	Cups of Sugar
1	
2	
3	
4	
5	
6	



Use a graph to represent the relationship.

Create a double number line diagram to show the relationship.



2. Write a story context that would be represented by the ratio 1:4.  
Complete a table of values for this equation and graph.